



Proud Provider of Tools for Window Film Manufacturers & Distributors



*professional*  
**TOOLS & ACCESSORIES**

# TABLE OF CONTENTS

## KNIVES

1



## BLADES

2



## SCRAPERS

5



## HANDLED SQUEEGEES

6



## SQUEEGEE ESSENTIALS

10



## PPF / WRAPS / VINYL & GRAPHICS

13



## HARD CARDS

15



## TUBE SQUEEGEES

16



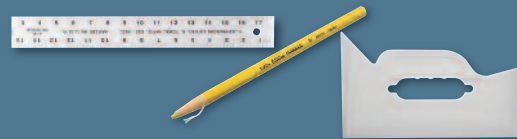
## INSTALLATION ACCESSORIES

17



## MEASURE / MARK & TRIM

19



## SPRAYERS & ACCESSORIES

21



## CLEANING / PREP & CHEMICALS

23



## SLITTERS & ACCESSORIES

26



## METERS

27



# KNIVES



## **GT227 OLFA XA1 ERGONOMIC KNIFE**

This ergonomically correct knife features a comfortable rubber grip for better control and less fatigue.



## **GT127 OLFA A1 KNIFE**

Used for film pattern cutting and trimming. Features a molded plastic handle for maximum control and comfort. Right or left hand use.



## **GT126 OLFA "SILVER" STAINLESS STEEL KNIFE**

The original Olfa stainless steel knife.



## **GT226 OLFA "SILVER 2" AUTO-LOCK KNIFE**

Significantly improved over the original "Olfa Silver". Features right or left hand use, blade position auto-lock, and one-segment click-action.



## **GT1051 OLFA SAC1 S.S. GRAPHICS KNIFE**

Slim stainless steel body with a 30 degree angle blade for precision in pattern cutting. Great for graphics and paint protection. Use GT1052 replacement blades (page 2).



## **GT124 PLASTIC UTILITY KNIFE**

Used for film pattern cutting and trimming.



## **GT114 OLFA PRO-LOAD**

Holds up to five blades at a time giving you 65 new cutting segments per load.



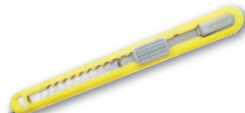
## **GT264 KDS L22 GRIPFIT AUTOLOCK**

Heavy-duty knife with comfortable grip. Use with any 8 pt blade (GT1021, GT131, or GT263) to cut window films 7 mil or greater.



## **GT027 NT PRO A1 "RED DOT" KNIFE**

Regarded by many installers as the finest professional knife available. The blade can be advanced in 1/2 segment increments for precision control. Right or left hand use.



## **GT026 NT INJECTOR ARTRIDGE KNIFE**

Used for film pattern-cutting and trimming. Holds five blades for automatic blade replacement capabilities.



## **GT984 NT A1000RP KNIFE**

Cartridge cutter with aluminum die-cast grip. Cartridge holds up to 5 blades.



## **GT1018 NT A250RP KNIFE**

Chemical-resistant and heat resistant polypropylene grip. Ratchet auto-lock slider locks blade in place while cutting. Right or left hand use.



## **GT1019 NT L500GRP HEAVY DUTY KNIFE**

NT heavy duty knife with ratchet auto-lock slider which locks the blade into place while cutting. Blade storage in handle. Use with 7 mil or greater films.



## **GT111 AUTO LOCK 8PT. KNIFE**

Heavy-duty knife with breakaway points for use with security films 7 mil or greater. Blade storage in handle.

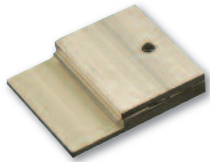


## **GT1054 NT A300GR ALUMINUM KNIFE**

All-purpose standard duty utility knife with stainless steel sliding holder and sturdy aluminum die cast grip for long lasting use. Ratchet auto-lock slider locks blade in place while cutting. End cap also functions as a blade snapper. Designed for either left or right handed use with simple reversal of blade.

Note: All knives are packed with a carbon steel blade except the GT126 & GT226, which include a stainless steel blade.

# BLADES



**GT944 AUTOMOTIVE GLASS EDGE TRIMMER** Use along the top edge of roll down windows for a precise “micro-edge” finish (1/8”). Use GT137 (page 4) as a replacement blade.



**GT128 CERAMIC SAFETY FILM CUTTER** Designed to deliver rapid, precise cuts for thick gauge safety films. It is intended for precision pre-cutting on flat, square-edged tables.



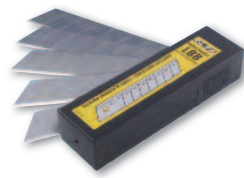
**GT116 OLFA AB50S STAINLESS STEEL SNAP BLADES** Pack of 50.



**GT115 OLFA AB10S STAINLESS STEEL SNAP BLADES** Pack of 10. The industry standard when it comes to snap blades for film and pattern cutting. Thirteen cutting edges per blade. Use in most standard duty knives.



**GT123 OLFA AB50B CARBON SNAP BLADES** Standard carbon snap blades with superior sharpness and edge retention. This 9 mm blade fits most standard duty knives and has 13 cutting edges per blade. Pack of 50.



**GT112 OLFA LBB50B ULTRAMAX 8PT BLADES** Replacement blades for GT111, GT264 & GT1019 heavy-duty knives. Triple-honed for extremely sharp edge. Ideal for cutting thick films, 7 mil or greater. Pack of 50.



**GT1052 OLFA A1160B CARBON 30 DEGREE BLADES** Standard duty acute angle snap-off blade for use when precision is a must. Seven cutting edges per blade strip. Fits GT1051 (page 1). Pack of 10.



**GT1031 OLFA ULTRAMAX ABB50B CARBON SNAP BLADES** An ultra-sharp carbon blade ideal for applications where superior sharpness is required. These blades are double-honed for extreme sharpness and are 25% sharper than the standard duty carbon blade. Eight cutting edges per blade, 50 blades per pack. Fits most standard Olfa knives.



**GT1020 NT BA50P STAINLESS STEEL SNAP BLADES** Stainless steel snap blades from the makers of the “Red Dot” knife. Use in most standard duty knives. Pack of 50.



**GT1021 BL50P BLADES** Heavy duty NT blades for use with the GT1019, GT111, & GT264. Pack of 50.



**GT262 KDS SB50SH STAINLESS STEEL SNAP BLADES** Pack of 50. Ideal for flat glass and paint protection films.



**GT266 KDS SB10SH STAINLESS STEEL SNAP BLADES** Pack of 10. Ideal for flat glass and paint protection films.

# BLADES *(cont'd)*



**GT265 KDS SB50SH-S STAINLESS STEEL SNAP BLADES** Use for cutting automotive window film. Pack of 50.



**GT263 KDS LB50BH POWERBLACK 8PT BLADES** Ideal for thicker films, 7 mil or greater. Fits GT111, GT264 & GT1019. Pack of 50.



**GT2016 KDS GB50BH POWER BLACK G-BLADE** The G-Blade is a double-honed extremely sharp 8 point blade that is ideal for cutting safety and security film. Fits GT111, GT264, & GT1019. Pack of 50.



**GT108 6" TRIUMPH CARBON BLADES** Carbon steel offers strong capable scraping that lasts longer than stainless steel blades but rust more easily. Use these blades for scraping adhesive and other debris from glass surfaces. Double edged for more scraping per package. These blades fit any of the standard 6" Triumph Scrapers. Pack of 25.



**GT108SS 6" TRIUMPH STAINLESS STEEL BLADES** Long lasting rust resistant stainless steel blade. Perfect for removing adhesive and other debris from glass surfaces. The double edge blade offers you more scraping than other blades. Pack of 25.



**GT108SS-HD 6" TRIUMPH S.S. HEAVY DUTY BLADES** This rust resistant stainless steel blade is thicker and stronger than the standard 6" Triumph Stainless Steel Blades. A must have for those tough film removal jobs. A new product exclusively for the tinting industry. A must have for all residential and commercial installers. (0.20X6") Pack of 25.



**GT110 HEAVY DUTY TRIUMPH BLADES** Carbon replacement blades for the Red Heavy Duty Triumph Scraper (GT106). This thicker blade (0.4mm) offers greater strength for those tough jobs. Pack of 10.



**GT131 8 POINT BLADES** 18mm replacement blades. Fits GT111, GT264 and GT1019. Pack of 5.



**GT105 4" SCRAPER BLADES** Fits the GT104 and GT1023. Carbon, pack of 10. (0.20mm x 4")



**GT1007 4" SCRAPER BLADES** Fits the GT104 and GT1023. Carbon, pack of 100. (0.17mm x 4")



**ANY BLADE CAN CUT OR SCRATCH GLASS!** It depends on the glass, edge of the blade and the angle of the cut. No matter what knife or blade you use, be sure to use a SHARP blade every time!

# BLADES *(cont'd)*



## **GT211 3" TRIUMPH BLADES**

Carbon, pack of 10. Use in the 3" Triumph Scraper (GT210).



## **GT140 1" SINGLE EDGE BLADES**

Use in any 1" blade holder. #9 Carbon steel single edge blade, non-rust aluminum back. Pack of 100. (.009"/.2886 mm)



## **GT140-12 #12 SINGLE EDGE 1" BLADES**

Use in any 1" blade holder. #12 Carbon steel single edge blade, non-rust aluminum back. Pack of 100. (.012"/.3048 mm)



## **GT137 STAINLESS STEEL 1" SINGLE EDGE BLADES**

Use in any 1" blade holder. Stainless steel, uncoated. Pack of 100.



## **GT2023 SCRAPERITE PLASTIC RAZOR BLADES**

These plastic razor blades are double edged and safe for glass. Great for removing adhesives from window films and vinyl decals. Pack of 100 blades.



## **GT139 PLASTIC RAZOR BLADES**

Perfect for removing leftover film and adhesive from surfaces that are easily damaged, such as rear window defrosters or other sensitive glass surfaces. Pack of 100 blades.

### *Tool Tip:*

Plastic razor blades are the most effective way to safely prep automotive glass. Although the blades are plastic, proceeding with caution is always a good idea.



**ANY BLADE CAN CUT OR SCRATCH GLASS!** It depends on the glass, edge of the blade and the angle of the cut. No matter what knife or blade you use, be sure to use a SHARP blade every time!

# SCRAPERS



**GT983 6" ERGONOMIC TRIUMPH SCRAPER**

An improved version of the standard 6" Triumph scraper with rounded corners for a more comfortable grip. Includes cover and one double-edged blade.



**GT983A 6" ANGLED ERGONOMIC TRIUMPH SCRAPER**

An improved version of the standard 6" Triumph scraper with rounded corners for a more comfortable grip and tilted handle. Includes cover and one double-edged blade.



**GT107 6" TRIUMPH SCRAPER** Lightweight and maneuverable. Includes cover and one double-edged blade.



**GT107A 6" ANGLED TRIUMPH SCRAPER**

The handle is tilted at a 30 degree angle. Includes cover and one double-edged blade.



**GT107PC 6" TRIUMPH SCRAPER WITH SLIDE COVER**

This is the new and improved version of the slide covered Triumph. With a bigger button and smoother action, the cover easily opens and closes with no hassle. No more fumbling with a separate blade cover while doing ladder work. Great for regular window cleaning, but not recommended for stripping off old film.



**GT106 6" RED HEAVY DUTY SCRAPER** Ideal for film removal. Includes cover and one double-edged blade. Use GT110 (page 3) as replacement blades.



**GT1023 AL PRO 4" STRIPPER**

This 4" scraper has an adjustable head as well as an adjustable knob for two handed use. Blades can be stored inside the handle.



**GT212 1" NEON MINI SCRAPER**



**GT210 3" TRIUMPH SCRAPER**

Smaller version of the regular Triumph. Designed to fit perfectly into corners.



**GT109 1" CLIP SCRAPER**  
**GT109S 1" CLIP SCRAPER W/THUMB SCREW**

These effective scrapers will accommodate standard or stainless steel 1" single edge blades as well as GT139 plastic razor blades. Try the Lil Chizler in these handles for more leverage.



**GT138 HEAVY DUTY 1" RAZOR SCRAPER**

Retractable safety scraper; intermediate blade position keeps the blade from sliding out while in use.



**GT138HYDE HYDE 1" RAZOR SCRAPER**



**GT104 4" SCRAPER WITH EXTENDED HANDLE**

4" scraper with extended handle allowing for better leverage. Use with GT105 or GT1007 as replacement blades. Blade cover included.

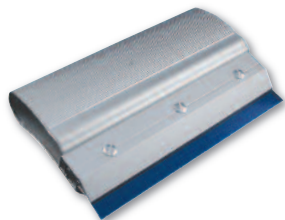


**GT994 BIG BLADE (3" X 4")**

Jumbo size plastic razor blade perfect for cleaning & film removal.

Note: All scrapers are packaged with a carbon blade.

# HANDLED SQUEEGEES



## GT042 8" SILVER SECURITY SQUEEGEE

Comfortable, ergonomic handle is designed especially for security film installation. Comes equipped with the GT041 blade. Curved handle applies more pressure to surface, reducing fatigue and ensuring easier, better installations. Blade is replaceable with either the Security Squeegee (GT041), Flatfoot (GT059), Pro Squeegee (GT061), or Orange Crush (GT259) blades.



## GT041 8" SILVER SECURITY SQUEEGEE BLADE

Standard replacement blade for GT042.



## GT069 6" FLATFOOT SQUEEGEE BLADE GT059 8" FLATFOOT SQUEEGEE BLADE

Specially angled blades for the Pro Squeegee (GT062 or GT064). The angle is designed to maximize the surface area in contact with the film, thereby removing much more mounting solution than a standard Pro blade with a square edge.



## GT061 8" PRO SQUEEGEE BLADE GT063 6" PRO SQUEEGEE BLADE

Replacement blade to Pro Squeegee (GT064 or GT062) used as a means of removing application solutions from beneath the film during the installation of all flat glass film types.



## GT062 6" PRO SQUEEGEE DELUXE

An installation squeegee as a ready-to-use assembly. Used to remove application solution during the installation of all flat glass film types.



## GT064 8" PRO SQUEEGEE DELUXE

An installation squeegee as a ready-to-use assembly. Used to remove application during the installation of all flat glass film types.



## GT053 6" SQUEEGEE & CHANNEL GT054 8" SQUEEGEE & CHANNEL GT055 12" SQUEEGEE & CHANNEL GT056 18" SQUEEGEE & CHANNEL

Stainless steel channel and soft rubber squeegee blade insert for use with the Unger Pro Handle (GT050 or GT050E). Used in the flat glass cleaning process and in the final cleanup after the film installation to remove soap streaks or smudges.



## GT045 140" SQUEEGEE BLADE GT048 12" SQUEEGEE BLADE GT049 18" SQUEEGEE BLADE

Replacement blades for Unger squeegee channel. Use for window cleaning, not installation.



## GT1001 UNGER 42" HARD REPLACEMENT BLADE

Hard replacement rubber is ideal for warmer working conditions and for optimum liquid removal on large, flat surfaces.



# HANDLED SQUEEGEES *(cont'd)*



**GT050 UNGER PRO HANDLE**  
For use with the GT053, GT054, GT055 or GT056 stainless steel channels with black rubber for cleaning or blue replacement blades (GT118) for installation.



**GT118 BLUE SQUEEGEE REFILL (6", 8", 12", 18" OR 120" ROLL)** Use in the Unger squeegee channel as a finishing squeegee for maximum water removal. Replacement blade for GT207.



**GT050E UNGER ERGOTEC HANDLE** Features a spring mechanism for quick blade changing and a finger indent on the top of handle for complete control. For use with GT053, GT054, GT055 or GT056 channels with black rubber for cleaning or blue (GT118) for installation.



**GT034 WHALE TAIL SQUEEGEE** Great for getting behind brake lights and back window applications.

**GT035 WHALE TAIL REPLACEMENT BLADE**  
(not pictured)

**GT036 WHALE TAIL HANDLE**  
(not pictured)



**GT208 SIDE SWIPER HANDLE ONLY**  
**GT207 SIDE SWIPER WITH BLADE** A great tool for the lower edge of rear windows and behind brake lights. Use GT118-6 as a replacement blade.



**GT1042 TITAN SQUEEGEE-RED** The new red Titan is now being made with the same plastic used to make bullet proof glass. This allows more strength and rigidity. The overall length is 14 3/4" which allows a longer reach for rear windows and its unique design will easily lift inner and upper door seals.



**GT043 BIG FOOT** Specifically designed to remove water from the lower portion of rear windows. Features a flex-firm blade molded right into the long flattened tennis racquet-style handle. The handle is wrapped with genuine Head SofTac traction grip material. Reaching the lower deck of back windows is not a problem with Big Foot. This tool measures a full 15" from blade tip to handle end.



**GT040 SLIM FOOT**  
Modeled after the Big Foot Squeegee, the Slim Foot has a slender design that can reach into tighter openings. This no rib squeegee helps reach behind brake lights and has a rubber grip for secure handling. Measures 15" from blade tip to handle end.

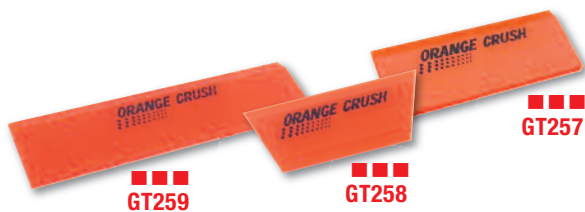


**GT205 THE BULLDOZER I - AUTOMOTIVE** Allows you to get to those hard to reach areas, such as behind speakers, brake lights, low angles and rear windows. Features a 6" squeegee blade and is 15" in overall length.



**GT206 THE BULLDOZER II - FLAT GLASS**  
Features reinforced ribs on the back side for extra rigidity and leverage. Includes 6" squeegee blade and is 15" in overall length. The Bulldozer Squeegees have a new rubber compound for less slip resistance, a flatter blade for better water extraction and added plastic under the blade corners for additional strength.

# HANDLED SQUEEGEES (cont'd)



**GT259 8" ORANGE CRUSH**  
**GT258 5" CROPPED ORANGE CRUSH**  
**GT257 5" ORANGE CRUSH** These blades help expel water while keeping their strength. The Orange Crush conforms to curved glass. Blades can fit into a handled grip (GT1046, GT1047 or GT1058) or can be used alone.



**GT117-8 8" BLUE MAX SQUEEGEE** The favored Blue Max installation squeegee is now available in 8" making it perfect for flat glass installs! Use this blade in the 8" Fusion Handle (GT1046) for great water extraction.



**GT1046 8" FUSION HANDLE** Ideal handle for all residential and commercial applications. Holds the 8" Orange Crush Squeegee Blade (GT259) and 8" Blue Max Squeegee Blade (GT117-8).



**GT1047 5" FUSION HANDLE**  
**GT1058 5" FUSION HANDLE-SHORT HANDLE** These handles are designed to optimize your leverage in removing mounting solution. Great for high performance automotive films and smaller residential windows. These handles accommodate the 5" Orange Crush Squeegees (GT257 or GT258 above) and the 5" Blue Max (GT117) and Clear Max (GT203) Squeegees.



**GT985 PERFORMAX HANDLE** Ideal for water extraction when used with GT117, GT117B, GT203 or GT257. Features a socket that accepts standard broom or paint roller extensions. This allows installers to get more leverage.



**GT1006 THOR'S HAMMER** Use for 6-mil+ safety film installations, and final pass on slow drying thin films. (Flat Glass Applications). Use GT117C (page 9) as a replacement blade.



**GT122 BLUE MAX SQUEEGEE WITH HANDLE**  
**GT204 SUPER CLEAR MAX SQUEEGEE WITH HANDLE** Ready-to-use installation squeegee. The specially modified Unger handle makes these installation squeegees must haves. The handle is not sold separately but replacement blades are available as part number GT203A and or GT117A. For extra leverage, use with a GT030 Motus D Grip found on page 17.



**GT203 SUPER CLEAR MAX SQUEEGEE BLADE**  
**GT203A ANGLED SUPER CLEAR MAX SQUEEGEE BLADE** Softer version of the Blue Max Squeegee, more flexible for back window installations.

# HANDLED SQUEEGEES (cont'd)

Beveled Edge



**GT117 BLUE MAX 5" HAND SQUEEGEE** Installation squeegee for automotive and flat glass applications. Harder than GT203; great for water excavation.

Square Edge



**GT117B SQUARE BLUE MAX 5" HAND SQUEEGEE** Ideal for installing security film.



**GT117A ANGLED BLUE MAX 5" HAND SQUEEGEE** Installation squeegee for automotive and flat glass applications. Harder than GT203, these tools are excellent for water evacuation.



**GT117C SQUARE BLUE MAX-NARROW** Replacement Blade for GT1006 Thor's Hammer (Page 8).

**NEW!**

**GT153 YELLOW** **GT153 ORANGE**



**GT153 YELLOW GRIP-N-GLIDE YELLOW**  
**GT153 ORANGE GRIP-N-GLIDE ORANGE**

New Grip-N-Glide combines an ergonomic handgrip with high-performance, interchangeable blades to give you just what you need for tint, wrap and PPF installations.

**NEW!**

**GT154 YELLOW** **GT154 ORANGE**



**GT154 YELLOW GRIP-N-GLIDE YELLOW REPLACEMENT BLADE**  
**GT154 ORANGE GRIP-N-GLIDE ORANGE REPLACEMENT BLADE**

Unlike tube squeegees with their belt-sanded round edges, the Grip-N-Glide features a .24" thick squeegee blade with French edges that are machine milled for maximum water extraction. And you can use either the firm yellow 90A or softer orange 85A blade to meet your application needs. The blades fit snugly into a frame that is covered by a substantial handgrip designed with comfortable finger grooves and a special surface texture to provide the ultimate control in either wet or dry use.

**NEW!**

**GT2056B** **GT2056Y** **GT2056R**



**GT2056B GO DOCTOR BLUE**  
**GT2056Y GO DOCTOR YELLOW**  
**GT2056R GO DOCTOR RED**

A fully integrated squeegee system where all of the components have been designed together, to work together. The I-beam handle fits comfortably in your hand. The I-beam handle is wrapped with a comfortable, non-slip material that provides secure grip. Go Doctor incorporates a quick-change blade system for speedy on the job replacements.

**NEW!**

**GT2057B** **GT2057Y** **GT2057R**



**GT2057B BLUE GO DOCTOR BLADE(FIRM)**

Use for window film and auto wrap installs.

**GT2057Y YELLOW GO DOCTOR BLADE(FLEX-FIRM)**

**GT2057R RED GO DOCTOR BLADE(SOFT)**

Use for window film, auto wraps, vinyl graphics and paint protection installs.

**GT1022**



**GT1022B**



**GT1022 STROKE DOCTOR**  
**GT1022B STROKE DOCTOR REPLACEMENT BLADE**

Designed with an I-beam construction handle that features an ergonomic slip-resistant grip and longer blade to apply squeegee pressure more evenly in the most hard to reach places.

## DUROMETER LEGEND

SOFTEST



HARDEST

# SQUEEGEE ESSENTIALS



**GT995 WHITE KNIGHT SQUEEGEE** Large squeegee with narrow handle allowing for better reach.



**GT066 6" CLEAR SUPER SQUEEGEE** Ideal for general purpose smoothing as well as pressure smoothing. The consistency of the material produces great results with minimal effort.



**GT067 3" CLEAR SUPER SQUEEGEE** Works best on corners, edges and bubbles allowing maximum pressure to be applied with minimal risk of damage to your work.



**GT038 12" CLEAR SUPER SQUEEGEE** Use for large areas of smoothing. The aluminum reinforcement at the back edge ensures rigidity.



**GT091 SLAMMER** Used for cleaning corners and along gaskets, wicking water out along borders and easily reaches rear windows.



**GT092 SHUTTLE** A hard card with the ability to reach into tight areas located at the bottom edge of rear window glass.



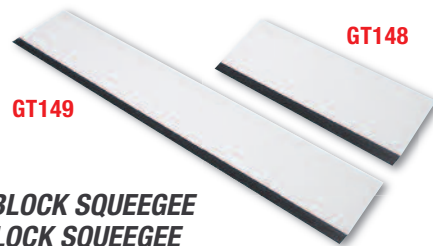
**GT068 HARD CARD SHARPENER** A must have to keep hard card and other squeegee edges smooth. Simply slide the squeegee edge along the tray to smooth out rough edges.



**GT088 BONDO SQUEEGEE** Flexible and soft card style squeegee. Great for third brake light installs.



**GT202 THE CONQUERER SQUEEGEE**  
**GT202B THE BLUE CONQUERER SQUEEGEE**  
 The Conquerer is the original corner reach tool. Features a soft squeegee blade along one edge and pointed hard card tips on the ends making it a versatile staple to any tool kit. Use the Blue version for a harder blade.



**GT149 12" BLOCK SQUEEGEE**  
**GT148 6" BLOCK SQUEEGEE**  
 Combination squeegee/hard card used for finishing during film installation. Can be cut to various angle shapes to reach tight, sharp corners.



**GT032Y TAIL FIN YELLOW (FIRM)**  
**GT032G TAIL FIN GREEN (SOFT)**  
 Great for getting behind brake lights and back window applications. Finger holes make holding onto the Tail Fin easy.

## Tool Tip:

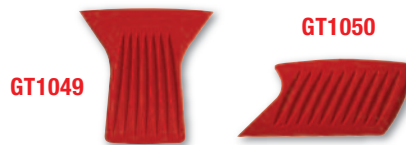
The Green Tail Fin (GT032) is a great tool for squeegeeing behind 3rd brake lights.

# SQUEEGEE ESSENTIALS *(cont'd)*



**GT083 LIL CHIZLER**  
**GT083 YELLOW DURA CHISEL**  
**GT083W WHITE CHIZZLER**

Ideal for removing decals, film or adhesive from sensitive surfaces. Use for pressing down small film creases or air bubbles. The White Chizzler is slightly larger, has thicker edges and is harder than the original pink Lil Chizler or the Yellow Dura Chisel.



**GT1049 GATOR BLADE I**  
**GT1050 GATOR BLADE II** The Gator Blade I and Gator Blade II products are alternatives to the Lil Chizler. Each has a unique shape to give you a better grip making it easier to apply pressure.



**GT201G GREEN CONTOUR (SOFT FLEX)**  
**GT201Y YELLOW CONTOUR (FIRM FLEX)**  
**GT201PLT PLATINUM CONTOUR (HARD FLEX)**

Gives you curves where you need them. Designed to match all those concave surfaces installers see every day. A great fit for window film, paint protection or vinyl installs. The Contour hugs surfaces evenly while spreading radial pressure outward for quick film adhesion. The elongated triangular shape gets in to all those hard to reach areas.



**GT113 GREEN GREEN DIAMOND TIP(SOFT FLEX)**  
**GT113 RED RED DIAMOND TIP(SOFT FLEX)**  
**GT113 WHITE WHITE DIAMOND TIP(SOFT FLEX)**  
**GT113 YELLOW YELLOW DIAMOND TIP(FIRM FLEX)**

Designed to meet the challenge of hard to reach areas, with square edges and 20 degree angled corners on both sides. The raised area in the center gives you a secure, slip-resistant grip, even when wet. The softer versions make great squeegees because their firm texture delivers pressure to the point-of-contact while their special material prevents scratching. Ideal for bumping edges, and use during shrinking because of their high heat resistant material.



**GT256 POWER STROKE YELLOW(SOFT FLEX)**  
**GT255 POWER STROKE RED(FIRM FLEX)**  
**GT254 POWER STROKE BLUE(HARD FLEX)**

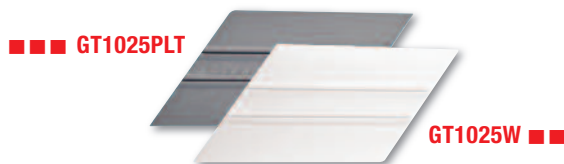
The original hand held molded squeegee, designed to fit comfortably in your hand. Measures 5.7" from tip to tip. Blue has a durometer for the ultimate in moisture removal, especially for sputtered films. Red is great for final pass on metal films. Yellow works well with dyed films and first pass on metal films.

DUROMETER LEGEND	
SOFTEST	■
	■■
	■■■
	■■■■
	■■■■■
	■■■■■■
HARDEST	■■■■■■■

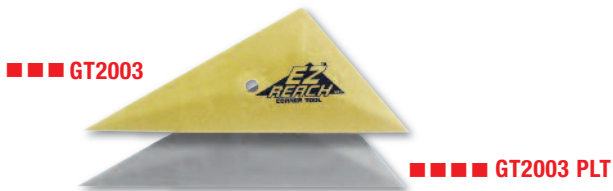
# SQUEEGEE ESSENTIALS (cont'd)



**GT151W WHITE QUICK FOOT(FIRM FLEX)**  
**GT151B BLUE QUICK FOOT(FIRM FLEX)**  
**GT151Y YELLOW QUICK FOOT(HARD FLEX)** A stiff squeegee with a handle for jobs that require medium reach. Slim and trim with an unwrapped handle. Comes in a variety of flex ratings to meet a wide range of applications.



**GT1025PLT REBEL-PLATINUM(HARD FLEX)**  
**GT1025W REBEL-WHITE(FIRM FLEX)** A hybrid of the bump card and Diamond Tip. Great as an applicator or use as a trim guide on flat glass. Rebel has a unique diagonal shape, reaching corners easily. The parallel grip ridges make holding onto the Rebel easy and they are available in two flex ratings to cover a multitude of installation needs.



**GT2003 ORIGINAL EZ REACH GOLD (FIRM FLEX)**  
**GT2003 PLT ORIGINAL EZ REACH PLATINUM (HARD FLEX)**  
 Stop cutting down hard card squeegees and use this versatile tool instead. These triangular cards with flat edges are perfect for putting down those little corners of film in hard to access areas. The gold version is flex-firm while the platinum offers a hard card texture with internal lubrication technology to help prevent scratching. EZ Reach is the ultimate corner tool.



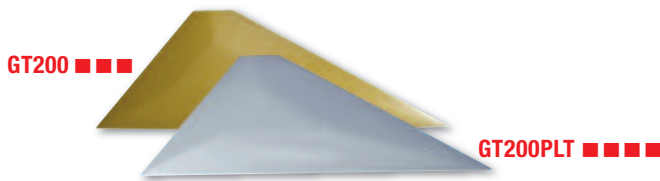
**GT2042 BLUE TRI-EDGE BLUE**  
**GT2042 YELLOW TRI-EDGE YELLOW**  
**GT2042 ORANGE TRI-EDGE ORANGE**  
**GT2043 TRI-EDGE PLUS** Tri-Edge is the new standard in the industry. Tri-Edge Plus features a rubber squeegee edge. (Hardness is in order of softest to hardest: Blue, Yellow, Orange)



**GT044BLUE LITTLE FOOT BLUE(SOFT FLEX)**  
**GT044RED LITTLE FOOT RED(FIRM FLEX)**  
**GT044BLACK LITTLE FOOT BLACK(HARD FLEX)** The unique blade shape of the Big Foot without the handle. Fits comfortably in your hand and features an angled, long-reach tip that gets behind gaskets and rubber seals easily. This squeegee measures about 6" (15 cm) along the usable edge. The pointed edge of this tool allows the installer to squeegee in very tight areas. Has plenty of room to keep a good grip on the squeegee.



**GT1070 PLATINUM SMART CARDZ** The modern version of the hard card squeegee, only better! 25% wider than a hard card, with a tapered tip, comfortable grip and thin squeegee edge make it the smartest tool in your apron. Great for sliding under gaskets and seals. Use Smart Cardz anywhere you would use hard card squeegees.



**GT200 EZ REACH ULTRA GOLD(FIRM FLEX)**  
**GT200PLT EZ REACH ULTRA PLATINUM(HARD FLEX)**  
 If you like the Original EZ Reach, you are going to love Ultra! It is exactly the same except the hole has been removed to make it stronger and the top has been trimmed down to give installers yet another handy angle to work with. Designed specifically to get at the corners of quarter glass windows, you will also reach for it again and again to put down those little corners of film in hard to access areas.



**GT2063 BLUE TRI-EDGE X BLUE**  
**GT2063 YELLOW TRI-EDGE X YELLOW**  
**GT2063 ORANGE TRI-EDGE X ORANGE** Tri-Edge is now premiering the Tri-Edge X. The angles have been recalculated and extended into a bigger tool. All the durability and quality of the Tri-Edge tool is now made to make those deep gaskets and hard to reach spots more accessible.

# PAINT PROTECTION / WRAPS / VINYL & GRAPHICS



**GT2017 FINISH LINE KNIFELESS TAPE**

The Knifeless Tape has a high strength filament that creates a clean sharp cut without the risk of damaging painted surfaces.



**GT2021 12YD. SLIP TAPE**

**GT2021-4 4YD. SLIP TAPE** Slip tape is the ultimate product for making your application squeegees smoothly and safely glide across window film, paint protection, car wrap and vinyl graphic applications. Avoid tearing or scratching the material you are working with. Include this product in your tool box!



**GT1000 MACTAC FELT SQUEEGEE**

Recommended for paint protection or vinyl graphic installations. The soft felt is designed to avoid scratching.



**GT1010 3M WET OR DRY SQUEEGEE**

Soft rubber card style squeegee. Recommended for paint protection installations.



**GT2002 4" MAGNETIC BLACK BONDO**

Magnetic bondo squeegee is great for the application of car wraps, cutting window film patterns, and vinyl graphics. The strong magnets allow you to hold the material in place in addition to holding your knife for easy access.

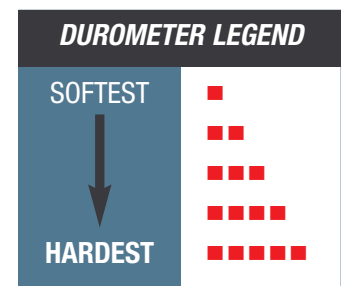


**GT1065 4" LIDCO FELT SLEEVE**

A felt wrap for any 4" hard card squeegee.



**GT1064 4" BUMP CARD WITH FELT EDGE** Four inch hard card with two ridges or "bumps". One edge is wrapped in felt.



# PAINT PROTECTION / WRAPS / VINYL & GRAPHICS (cont'd)



**GT2005 MANGO SMART CARD WITH FELT** Smart Cardz are the modern version of the hard card squeegee but they're better because they are 25% wider and their tapered tip, comfortable grip, great flex and thin squeegee edge make it the smartest tool in your apron! Smart Cardz feature a grip-handle molded right into its body so they're easy to manipulate. The felt edge makes this the perfect tool for paint protection, vinyl signs and graphics.

**GT2006 MANGO REBEL WITH FELT** Card squeegee with good angles that extends your area for better manipulation. Great for getting behind gaskets and rubber seals. The felt edge makes this perfect for paint protection, vinyl, signs and graphics.

**GT2007 MANGO LITTLE FOOT WITH FELT** This squeegee measures about 6" (15 cm) along the usable edge. The pointed edge of this tool allows the installer to squeegee in very tight areas. The Little Foot has plenty of room to keep a good grip on the squeegee.

**GT2008 MANGO BUMP CARD WITH FELT** 4" Mango Bump Card with extreme glide felt edge treatment.

**GT1085 MANGO PRO PACK WITH FELT** Includes one each GT2005, GT2006, GT2007 & GT2008

## Tool Tip:

Felt edge tools are becoming increasingly popular due to the changes in the industry. From Car Wraps, Vinyl Graphics, to Paint Protection films there is a felt product for most applications. Check out the newest growing selection of products.



## **WES WET EDGE SQUEEGEE**

Wrap your vehicles faster and better. The only squeegee applicator made to use wet. No scratches, no marks, just smooth motions that easily glides across vinyl films and painted surfaces without worry of mistakes or damage. The Wet Edge Squeegee is a Teflon squeegee with a unique microfiber bonded to it. Can be used either wet or dry. This is the top of the line applicator in the business. Colors will vary.



## **WG1 WRAP GLOVE**

The New Vehicle Wrap Glove is sold in pairs and is a must have for anyone installing vinyl graphics and vehicle wraps. Installing with your bare hands can cause over stretching and puckering of the vinyl as well as potential damage from the transfer of oils on your skin. These lint free and durable Wrap Gloves reduce friction while handling the material giving you great results every time.



# HARD CARDS



**GT086 BLU** *HARD CARD*



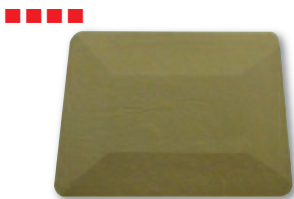
**GT086 WHITE** *HARD CARD*



**GT086 BLACK** *HARD CARD*



**GT086 PINK** *HARD CARD*



**GT086 GLD** *HARD CARD*



**GT086 PLT** *HARD CARD*



**GT086 PURPLE** *HARD CARD*



**GT087 YELLOW** *LIDCO SQUEEGEE*



**GT087GRAY** *LIDCO SQUEEGEE*



**GT087-6 GRAY 6"** *LIDCO SQUEEGEE*



**GT099 UNIVERSAL** *SQUEEGEE*



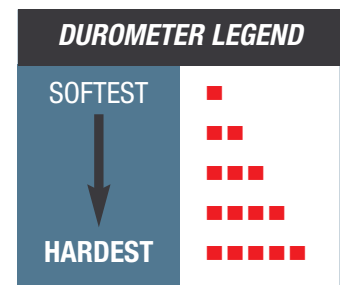
**GT079 4"** *3M GOLD SQUEEGEE*



**GT080 4"** *3M BLUE SQUEEGEE*



**GT086-6Y 6" YELLOW HARD CARD SQUEEGEE**  
**GT086-6B 6" BLACK HARD CARD SQUEEGEE**  
**GT086-6W 6" WHITE HARD CARD SQUEEGEE**



# TUBE SQUEEGEES

GT119 ■



GT120 ■



■ GT121



**GT119 4" BLACK SMOOTHIE TUBE SQUEEGEE**  
**GT120 9" BLACK SMOOTHIE TUBE SQUEEGEE**  
**GT121 28" BLACK SMOOTHIE TUBE SQUEEGEE**

Soft black squeegee with gray pvc handle.

■ GT146



**GT146 28" BLACK SMOOTHIE BLADE ONLY** Squeegee tool used for glass cleaning, sometimes called the "Smoothie". Economy size (28") usually cut to shorter lengths before use.



■■■ GT1026

■■■ GT145S



■■■ GT147S



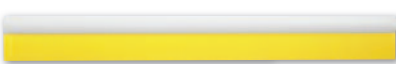
**GT1026 3 1/2" SOFT DK. YELLOW TURBO SQUEEGEE**  
**GT145S 18 1/2" SOFT DK. YELLOW TURBO SQUEEGEE**  
**GT147S 18 1/2" SOFT DK. YELLOW TURBO SQUEEGEE BLADE**

A soft installation squeegee used to remove application solution during installation of all auto and paint protection films.

GT235 ■■■■



GT145 ■■■■



GT236 ■■■■



GT147 ■■■■



**GT235 5 1/2" YELLOW TURBO SQUEEGEE**  
**GT236 5 1/2" YELLOW TURBO SQUEEGEE BLADE**

An installation squeegee used to remove application solution during installation of all auto and paint protection films.

**GT145 18 1/2" YELLOW TURBO SQUEEGEE**  
**GT147 18 1/2" YELLOW TURBO SQUEEGEE BLADE**

Used for removal of application solution during the installation process. You can cut the blade down to smaller lengths if desired.

GT150 ■■■■■■



GT152 ■■■■■■



**GT150 18" RED TURBO BLADE**  
**GT152 5" RED TURBO BLADE**

The hardest version of the Turbo Blade, used for removal of application solution during the installation process



■■■ GT2053



■■■ GT2004



**GT2053 4.5" GREEN TURBO**  
**GT2004 18 1/2" GREEN TURBO BLADE** The green turbo is perfect for paint protection installs, can be cut down to smaller sizes, and has a durometer (hardness) between the GT146 Black Smoothie and the GT147 Yellow Turbo Blade.

## Tool Tip:

Use GT2021- Slip Tape (page13) on the edge of your turbo blade to make it slide even smoother across paint protection film or vinyl.

## DUROMETER LEGEND

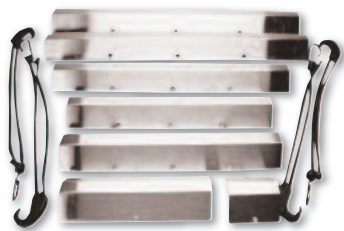
SOFTEST



HARDEST



# INSTALLATION ACCESSORIES



**GT130 GASKET WIZARD** This device is used to carefully pull back gaskets for easy film-to-glass installations below the gasket. Rub rails are located at the base of all automotive door window glass and are used for weatherproofing the openings between the glass and the door structure. Many installers find the Gasket Wizard helpful, even without the use of the bungee cords.



**GT132 HOOK TOOL**  
Use this tool to pull back on rubber gaskets in auto doors to tuck film below the seal.

## Tool Tip:

Tinting automotive windows is progressively more challenging. View the different tools to assist you in “tucking” the film under the door panel.



**GT033 RED DEVIL SQUEEGEE** Flexible squeegee that is great for tight corners and maneuvering around gaskets.



**GT030 MOTUS D GRIP HANDLE** Use with almost any handled squeegee to give extra leverage.



**GT135 BLADEATER** Designed for professional installers, the BLADEater holds your knife safely and securely, and allows you to easily snap and discard blades into the replaceable well. Once the well is full, simply toss the well, blades and all.



**GT194 GASKET PUSH STICK**  
**GT194BLUE BLUE GASKET PUSH STICK**



**GT134 BLADEATER REPLACEMENT WELL**  
Replacement well for BLADEater.



**GT1004 OLFA DC4 BLADE DISPOSAL** Blade disposal unit that can be emptied and reused.

## Tool Tip:

You don't want to leave behind discarded blades on a job site for a potential injury later. Safely snap blades into a disposal unit.



**GT2051**



**GT2051 QUICK DRAW TOOL APRON**

**GT2052 QUICK DRAW TOOL BELT** Quick Draw Apron (GT2051) and Belt (GT2052) are used for automotive and flat glass installs. The design enhances speed and comfort with an elastic waist band that contours the body without the constriction that most other tool aprons/belts cause. In addition, the apron (GT2051) has oversized pockets that are ideal for holding squeegees and keep them deep enough to reduce the risk of contact against the paint of a vehicle. Also features a separate slot for your knife and has a card holder positioned in the front middle pocket. Multiple slots can be used for personal customization. The Deluxe Belt includes a snapper box, bottle pouch and a Paper Towel Dispenser.



**GT2052**



# INSTALLATION ACCESSORIES *(cont'd)*



## **GT251 WAGNER HT3500 DIGITAL HEAT GUN**

This model allows you to heat shrink in low or high fan speeds and has a variable temperature setting to fine tune the amount of heat needed for a specific application. (120 volt)



## **GT250 WAGNER HT1000 HEAT GUN**

Standard heat gun with high, medium, low settings. (120 volt)



## **GT176 WAIST APRON**

Heavy duty waist apron for easy access to tools while on the job.



## **G1080 ERGODYNE WAIST APRON**

13 pocket tool apron.

**NEW!**



**GT2015**

## **GT2015 JIFFY STEAMER J4000W STEAMBLADE**

The J4000W has a large 1 gallon internal water reservoir and provides 2 hours of continuous steam before refilling. Quick 15 minute heat-up time. Go from PREHEAT mode to full steam power in just two minutes. Has a flexible 7.5' hose for easy maneuverability on the job and an angled 9" aluminum steam head concentrates steam into a targeted area for precise removal. Steam-resistant nitrile gloves included in each unit. (120 volt; alternate voltage available upon request).



**GT921**

## **GT921 JIFFY STEAMER J2W FILM REMOVER**

Impact resistant, with a 1300 watt heating element and heats up in two minutes with 2 hours of steaming per filling. Great for removing film and adhesive from vehicle rear windows. (120 volt; alternate voltage available upon request)



**GT921C**

**GT921B**

## **GT921C JIFFY STEAMER J2W REPLACEMENT BOTTLE**

Replacement bottle for the J2W Jiffy Steamer (GT921).

## **GT921B JIFFY STEAMER J2W REPLACEMENT FUSE**



## **GT979 KEVLAR HEAT GLOVES (PAIR)**

Heat resistant gloves great for use during heat shrinking.

### **Tool Tip:**

Jiffy Steamer will help prevent damaging defroster lines when removing film from rear windows. Besides making life easier, a Steamer will pay for itself in just a few jobs when you consider the considerable time savings.

# MEASURE / MARK & TRIM



**GT191 THE EDGE TOOL** A convenient trim guide or use the curved edge to pull back gaskets.



**GT190 GRAY 5-WAY TRIM GUIDE**  
**GT190BLACK BLACK 5-WAY TRIM GUIDE**  
**GT190WHITE WHITE 5-WAY TRIM GUIDE**

Use these tools as a trim guide or wrap in paper towels and use as a bump tool. Each of these offers unique shapes and corners. The GT190 White even features a ruler.

## Tool Tip:

In addition to a trim guide, the GT190 5-Way Tools are also an effective squeegee, especially when wrapped with a low lint paper towel or cloth to absorb moisture along the border of the film.



**GT990 3/8" RED FILM TAPE**  
**GT991 1" RED FILM TAPE**

Features low-tack adhesive. Use to retape film rolls for storage. 60.1 yards per roll.



**DOTRIX DOT MATRIX VINYL 16"X50'**

Gives the dot matrix area on cars a smooth finished look. Pressure sensitive adhesive requires no heat shrinking.

## Tool Tip:

Whether you're a novice or a professional, dot matrix on rear glasses are difficult to contend with for installers worldwide. Try the "Dotrix" product for the most problematic areas.



**GT157 1/2" BLACK OUT TAPE**  
**GT158 1" BLACK OUT TAPE**  
**GT159 1 1/2" BLACK OUT TAPE**

Black matte vinyl used to hide light gaps along edges of film installations. (150' per roll)



**GT1096 DO NOT ROLL DOWN TAPE**

Approximately 200 stickers per roll.



**GT981 DO NOT ROLL DOWN STICKERS**

Perfect as a reminder on new auto installs. Features low-tack adhesive. (1000 per roll)

# MEASURE / MARK & TRIM *(cont'd)*



## GT972 DIGITAL TAPE MEASURE

This compact meter uses a narrow beam to measure distances instantly, even through door openings and in crowded rooms. Lifetime lithium battery included.

GT078-75



GT078

## GT078-75 3/4" BLACK ACRYLIC FELT GT078 1 1/2" BLACK ACRYLIC FELT

Helps reduce scratching of automotive films on some vehicle roll down windows. (50' per roll)



*Tool Tip:*

Application of felt tape has become a popular solution to the familiar "scratching" problem on some vehicle roll down windows.



## GT075 YELLOW FILM MARKER

Handy for 3 basic purposes:

- 1) Marking film prior to installation of windows with unusual shapes (arches, trapezoids, etc.) which must be cut to approximate shape before the final "lay-up".
- 2) Circling a contaminant (hair or fiber) before pulling back the film to remove it.
- 3) Marking film edges to check for glass movement on side roll-ups during the trimming process. Yellow grease mark easily wipes away.

GT076



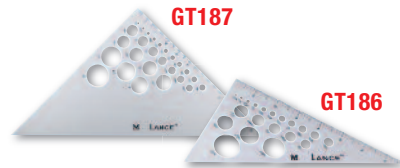
GT077



## GT076 FILM OPAQUER PEN - THIN POINT

**GT077 FILM OPAQUER PEN - BROAD POINT** Used by installers to hide fine line mistakes in trimming which causes light intrusion at the film edge.

GT187



GT186

## GT187 12" TRIANGLE

45/90 degrees with circle templates.

## GT186 8" TRIANGLE

30/60 degrees with circle templates.



**GT188 WINDSHIELD WIZARD** Allows for quick and accurate trimming around rearview mirror mounts.

GT183



GT182



## GT183 18" STRAIGHT RULER

## GT182 36" STRAIGHT RULER

Imperial measurements including 1/8ths & 1/16ths.

# SPRAYERS & ACCESSORIES



**GT090 SPRAYMASTER BOTTLE & TRIGGER** An overall heavy duty sprayer, this spray bottle comes with a 5 year manufacturers warranty and is chemically resistant. It is equipped with a strong trigger and holds 32 ounces.



**GT096 POLYSPRAY 2** This pressurized spray bottle holds more solution than the 32 oz. bottles and reduces "finger-fatigue" eliminating the need for pumping while spraying via a simple trigger. Handy for large windows and long duration sprays. Has an adjustable spray nozzle.(1.25 liters)



**GT1008 IMPACT JR. PUMP-UP SPRAYER** Pressurized spray bottle that holds 48 ounces and reduces "finger-fatigue" eliminating the need for pumping while spraying via a simple trigger. Has adjustable spray nozzle.



**GT1067 MERCURY PRO+ TRIGGER & BOTTLE** The next generation in spray bottles, the Mercury PRO+ features viton seals and a double action pump that sprays both when you pull back and when you release the trigger giving you more liquid with each pull. This lightweight ergonomic trigger/bottle combo holds up to 1 liter (33 ounces) of fluid.



**GT101N STAINLESS STEEL 5 GALLON SPRAYER** Deluxe pressure sprayer holds up to 5 gallons of mounting solution in a stainless steel tank. Hose can reach up to 25' in length. Fill with solution and pressurize with air from any compressor. Curly, flexible hose reaches into cars or stretches to go up a ladder with you.

**GT101-H**



**GT101-HG**



**GT101-H REPLACEMENT SPRAY GUN FOR GT101N** Replacement nozzle for GT101N.

**GT101-HG 25' REPLACEMENT HOSE AND SPRAY GUN FOR GT101N**

Replacement hose and nozzle assembly for 5 Gallon Stainless Steel Sprayer.



**GT102 ORANGE 3 GALLON PRESSURE SPRAYER** Stores either window cleaner or application solution. Essential for those big commercial jobs. Long 13' hose allows great mobility and large capacity gives uninterrupted and fatigue-free installation.

**GT2012**



**GT102-P**



**GT2012 NOZZLE FOR PRESSURE SPRAYER** Replacement nozzle for the GT102, 3 Gallon Pressure Sprayer.

**GT102-P REPLACEMENT PUMP FOR ORANGE 3 GALLON SPRAYER**

## Tool Tip:

Always clean your tanks and sprayers after 48 hours of use to keep contamination down. Don't forget to clean the filters!

# SPRAYERS & ACCESSORIES *(cont'd)*



**GT102-OP REPLACEMENT PUMP FOR BLACK 3 GALLON SPRAYER** This pump is for the old style black tanks only.



**GT097 32OZ. BOTTLE** Empty 32 ounce bottle only.



**GT098N MAXI TRIGGER SPRAYER** An industry staple. Ergonomic trigger with high output and durability.



**GT989 7 GALLON TWIN SPRAYER** Perfect for shops or large commercial jobs, this 7 gallon sprayer includes a cart and two 25' coiled hoses with guns. No more need for an air compressor or constantly pumping tanks. Use with GFCI protected circuits only. (120 volt)

## *Tool Tip:*

Due to the large amounts of contamination in tap water, to achieve the best results and the cleanest installs we highly recommend using distilled water or a reverse osmosis filtering system.



# CLEANING / PREP & CHEMICALS



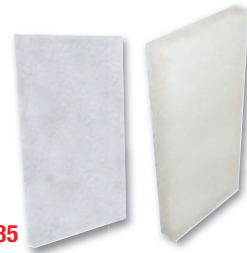
## GT070 LOW LINT WIPES

Center Pull Towels, 2 Ply, 8" x 605', 660 sheets/roll, 3" core diameter.



## GT072 WIPE DISPENSER

For use with GT070.



GT085

GT085 THK

## GT085 WHITE SCRUB PAD

### GT085 THK 1" THICK SCRUB PAD

Great for cleaning windows prior to installation and prepping dot matrix areas.



**GT1066 COPPER MESH PAD** The Copper Mesh Pad is for dot matrix prep ONLY! It will ABSOLUTELY scratch glass..

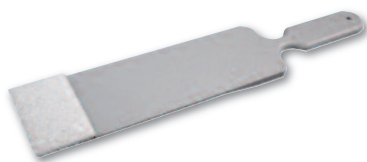


## GT071 VIRTUALLY "LINT FREE"

**REUSABLE WIPES** 300' of cloth per box.

### Tool Tip:

Low lint towels or wipes are a necessity for quality window film installations. Absorbent wipes are ideal for cleaning windows and covering hard cards for bumping or wicking around the film edge.



**GT209 THE SCRUBBER** Used to reach behind speakers and brake lights. Scrub away adhesive along the bottom edges of sloped rear windows. Uses replaceable standard White Scrub Pads (GT085) cut 2" x 3". This tool is 3" by 15" long.

### Tool Tip:

There are many ways to clean and prepare automotive glass, no matter what the circumstance always test the product of your choice in an inconspicuous area to prevent potential damage.

# CLEANING / PREP & CHEMICALS *(cont'd)*



**GT716 PLEXUS PLASTIC POLISH-13 OZ**

Anti-static plastic polish, safe for all window films. Leaves behind a protective sheen on any plastic surface.



**GT160 FILM GUARD- 19 OZ**

Highly recommended for use after film installations as a cleaner and polish. Helps reduce friction and condensation between film and rubber gaskets on roll-down windows.

**Tool Tip:**  
After installing film, be sure to clean and polish it with GT160 Film Guard. Film Guard is specifically designed for window film and is a great sales add-on.



**GT715 SPRAYWAY GLASS CLEANER-19 OZ**

Ammonia free, film-friendly aerosol spray used for cleaning film surfaces after installation. Can also be used as an adhesive remover when left to soak.



**GT735 FILM-ON CONCENTRATE**

1 quart concentrate mounting solution. Use for pressure sensitive adhesives and sputtered copper films.



**GT733 DIRT-OFF CONCENTRATE**

1 quart concentrate cleaning solution. Use for interior automotive window cleaning. Great for removing oily deposits on automotive glass. Dirt-Off can also be used as an adhesive accelerant to give additional tack for dot matrix areas.



**GT1071 SUPER STRIPPER ADHESIVE REMOVER- GALLON** A highly concentrated, ready to use adhesive remover.



**GT162P EASY STRIPPER II ADHESIVE REMOVER- GALLON** Used to soften adhesive left on glass. Ready to use.



**GT2013 TINT SLIME- GALLON**  
**GT2022 TINT SLIME- 32 OUNCE**  
**GT2013 SAMPLE TINT SLIME- 4 OUNCE (NOT PICTURED)** Tint Slime is a window tint mounting & cleaning solution. Tint Slime can be used to install automotive window tint, paint protection film, flat glass film, and vinyl. Tint Slime is free of particulates and won't separate. Tint Slime is safe for use on interiors, biodegradable, and of course, tint safe. Concentrate; mix 1 ounce per 1 gallon of water.

# CLEANING / PREP & CHEMICALS *(cont'd)*



**GT1036 SIMPLE PINK ADHESIVE REMOVER- GALLON** Adhesive remover. Can be used full strength or 2-3 parts water.



**GT1035 BLUE SLIP UP- GALLON** Slip agent to aid in window film installation. Mix 8 ounces with 1 gallon water to serve as a conditioner or cleaner.



**GT1034 DOT DEVIL- 32 OZ** A ready to use dot matrix prep solution. Use to aid film adhesion over dot matrix areas in auto installs.

## *Tool Tip:*

Always error on the side of caution when using chemicals. Be sure to protect your skin as well as any surfaces the product may come in contact with.



**GT2010 TINT OFF- QUART** Ready to use and specially formulated for the window film industry to make tint removal a snap.



**GT714 X-100 APPLICATION SOLUTION- GALLON** Cleaning and application concentrate for most dry adhesives. The mild acid formulation makes this a great cleaning agent for glass contaminated with oil, grease or dirt. Recommended mixture is 1 ounce per 1 quart of water. Not to be used with copper or silver based films.

## *Tool Tip:*

When mixing mounting solutions, it is recommended that you use filtered water for best results.

**GT1040**



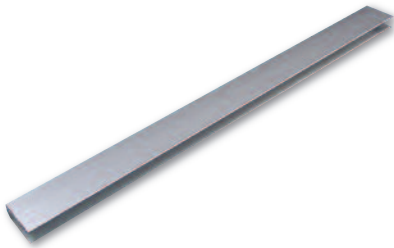
**GT1039**

**GT1040 RAPID REMOVER- GALLON**  
**GT1039 RAPID REMOVER- 32 OZ**  
A non-toxic, water-soluble adhesive remover that breaks down and removes adhesive fast. Ready-to-use. Available in two sizes: Gallon or 32 ounce bottles.

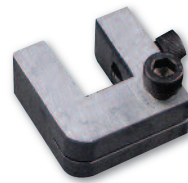


**GT1041 RAPID TAC II- 30 OZ** Great adhesive promoter even in cold weather conditions. A great solution for dot matrix areas or vinyl products.

# SLITTERS & ACCESSORIES



**GT822 72" BOX SLITTER CHANNEL** 72" aluminum U-channel for sliding over the edge of a film box-top to serve as a straight edge when making horizontal cuts (across the web width) after pulling film out to desired length. Handy for in-field work. Saves the cost of more expensive film cutters. Blade Holder sold separately.



**GT821 BLADE HOLDER FOR GT822**  
Blade not included.



**GT910 60" FILM HANDLER**

**GT911 72" FILM HANDLER** The GT910 or GT911 Film Handler comes standard with 2 each Cutter Head Assembly (GT912), 2 each 3" Roller Assembly (GT904) and one pack of blades (GT943). LADDER NOT INCLUDED



**GT940 FILM HANDLER REPAIR KIT**

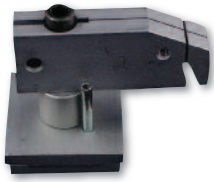


**GT943 FILM HANDLER REPLACEMENT BLADES**  
20 blades per cartridge.

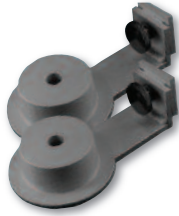
## *Tool Tip:*

The GT910 or GT911 Film Handler will reduce waste, save labor and help complete jobs in a more timely manner. They can also be wall mounted for use in automotive applications.

# METERS



**GT912 FILM HANDLER CUTTER ASSEMBLY** This is the base and the swivel head of the blade holder.



**GT904 3" ROLLER ASSEMBLY** Standard roller assembly on Film Handler. These are 6" risers and will accommodate film on 3" cores. Sold as a pair (2).



**GT986 FILM HANDLER BLADE HOLDER** The swivel head portion of the blade holder.



**GT1012 1/4" CUTTER SHIM FOR 6" HUBS**  
**GT1013 1/8" CUTTER SHIM FOR 6" HUBS** Sold as eaches (1).



**GT942 1/4" CUTTER SHIM FOR 3" HUBS**  
**GT941 1/8" CUTTER SHIM FOR 3" HUBS** Sold as eaches (1).



**GT913 6" ROLLER ASSEMBLY** Use for security film on 6" cores. Comes with 12" risers to accommodate rolls of film on 6" cores. Sold as a pair (2).



**GT978 LASER THERMOMETER** Reads temperatures of solid surfaces, best when used within three feet of surface. Demonstrate difference once window film is applied to glass with new reading of solid surface. Not to be used on glass. Powered by a 9-volt alkaline battery (included).

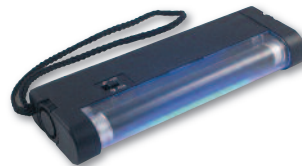


**GT2020**

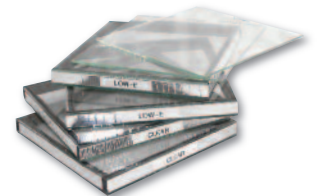
**GT2020 & GT2019 Sold Separately**

**GT2020 HEAT SHEET DEMO CARD** Vibrantly changes color when it encounters heat. To demonstrate heat blocking capabilities of your glass or film, use the Demo Card in combination with a heat lamp.

**GT2019 HEAT SHEET ACRYLIC STAND** Used to hold your Heat Sheet Demo Card in place to show heat transfer.



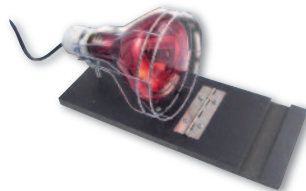
**GT963 U.V. LIGHT SOURCE LAMP** Excellent tool to demonstrate, measure or show how much U.V. window films keep out. Powered by 4 "AA" alkaline batteries (NOT included).



**GT976 GLASS SAMPLE SET** Conduct your sales demonstration effectively by including glass samples to help illustrate the benefits of film over standard glass. Includes 2 clear single pane, 2 clear IG and 2 low-E sets.



**GT961 INSULATED GLASS THICKNESS & GAP GAUGE** Used to measure glass and air space thickness in sealed insulating glass units. Carrying case included. Powered by two standard "AAA" alkaline batteries (included).



**GT962 HEAT LAMP UNIT** Great tool for tabletop presentations. Powered by 110 volt power cord. (Plug in).

## Tool Tip:

To prevent damage to your Film Handler cutter head/blade holder always move the blade holder from the base not by the swivel head.

# METERS (cont'd)



**GT992 LASERLABS M100 ONE PIECE METER** Used to measure visible light transmission (VLT) on roll down windows. This meter is auto calibrating and is powered by a 9-volt alkaline battery (NOT included).



**GT993 LASERLABS M200 TWO PIECE METER** Measures visible light transmission (VLT) on fixed and roll down windows. This meter is auto calibrating and is powered by a 9-volt alkaline batteries (NOT included).



**GT2064 ENFORCER II** The TM1000 Enforcer II is a light weight and pocket sized automotive tint meter. It comes equipped with a coin cell battery that will last for up to 2500 uses and is auto calibrating.



**GT2035 TINT-CHEK TC1800 AUTOMOTIVE METER** Measures visible light transmission (VLT) on roll down windows. A smaller meter that fits comfortably into a shirt pocket. Tremendous reliability, ignoring ambient light. Calibrated to a NIST traceable standard.



**GT2036 TINT-CHEK + TC2800 AUTOMOTIVE METER** Measures visible light transmission (VLT) on roll down windows. Includes ALL the benefits of the TC1800 (GT2035) plus features a backlit LCD display making it much easier to read in low light conditions. Reads to the nearest tenth percent for greater accuracy. Calibrated to a NIST traceable standard.



**GT975 STRENGTHENED GLASS DETECTOR** Allows users to confirm if glass has been strengthened. The detector can test single panes of glass or multiple panes in a window at a single time, and from a single side.



Not all items shown are included in kit.

**GT974-SOFT PROFESSIONAL METER SALES KIT W/CASE**  
Our UV & Solar Sales Presentation Kits offer a single source for convenient and convincing sales demonstrations. Kit Includes:  
GT968 Digital BTU & Trans-Meter, GT962 Heat Lamp Unit, GT973 UV Meter, GT963 U.V. Light Source Lamp, GT971 Soft Case with Strap.



**GT969 TOUGHENED GLASS INDICATOR** Used to determine which, if any, panes in a window unit are heat-treated. Knowing this allows use of films that would otherwise be inappropriate on regular annealed glass. Full set of user instructions and case included (120 volt).

**GT971 SOFT CASE FOR METERS (NOT PICTURED)**

# METERS (cont'd)



**GT973 UV SENTRY METER** Position the meter facing the UV source, such as sunlight or a heat lamp (GT962), and turn the meter on. Place various materials between the meter and the UV source and the resulting UV Transmission percentage will be displayed. Powered by a 9-volt alkaline battery (included).



**GT964 U.V. METER WITH TEMPERATURE** This meter gives UV transmission percentages, UV power, and temperature. The GT964 is the most versatile product available for measuring UV. You can measure UV intensities (irradiance), UV Transmission %, and temperature in Fahrenheit and Celsius. Unlike other UV products on the market, the GT964 is extremely simple to operate. The digital display is continually updated with real-time readings. The GT964 is powered by a 9-volt alkaline battery (included).



**GT967 SP1065 DIGITAL BTU SOLAR POWER METER** This wide spectrum digital meter measures solar radiant energy intensity directly transmitted through glass (or the film-glass combination) in units of BTUs per square foot per hour or watts per square foot. Effective tool showing the relative effectiveness of various films in blocking solar radiant heat. Especially useful for showing how a very dark dyed film may allow far more energy to pass through than a much lighter metallic film. Can be switched to read in metric units. Powered by a 9-volt alkaline battery (included).



**GT968 SP2065 SOLAR TRANSMISSION & POWER METER** Use this meter to evaluate solar performance. It provides excellent resolution, reading low light conditions more accurately than competitors, with no need for adjustments. The easy to read digital display toggles between power and transmission percentage mode. It's small, portable, and convenient to take out in the field. Can be switched to read in metric units. Powered by a 9-volt alkaline battery (included).



**GT966 V.L.T. AND POWER METER** The GT966 shows the performance of your film and proves to your customer that your product reduces fading by controlling visible light. It calculates visible light transmission percentages, power readings (W/m<sup>2</sup>), measures visible light spectrum (400-700 NM), and includes a digital thermometer in Centigrade and Fahrenheit. Powered by a 9-volt battery (included).



**GT960 LOW-E COATING DETECTOR** Detects the presence and location of thermal resistant coatings (LOW-E) used on energy efficient single and dual pane glass. Never requires calibration. Powered by a 9-volt alkaline battery (included).



**GT2034 SS2450 SOLAR SPECTRUM TRANSMISSION METER** This device is the most accurate meter to date. It is the only meter calibrated to ISO9050, NFRC300 and EN410 standards. Effortlessly demonstrate six performance characteristics at a time including two IR measurements: UV, VIS, SOLAR, IR 900-1000 nm, and IR 780-1780 nm ensuring the complete picture of a window film's performance. Simply slide the glass sample into the opening and see the resulting values displayed. No additional light sources are needed. Everything is self-contained in a single convenient package to visualize the true performance of a glazing system, this meter is a must.

**Glass samples not included.**



**GT982 SPECTRUM DETECTIVE METER** Displays three ratings at a time: UV, Visible Light, and Infrared transmission values. Carrying case included. Powered by a 9-volt alkaline battery (included).

**Glass samples not included.**

**OLFA**<sup>®</sup>  
Best made cutting tools in the world.<sup>®</sup>

**EDTM**  
Glass, Window & Film Test Equipment

**UNGER**

**NT Cutter**<sup>®</sup>  
EVER NEW & EVER SHARP

**PERSONNA**<sup>®</sup>

**Triumph**  
SCRAPERS

**Sprayway**<sup>®</sup>

**ProToolsNow.com**<sup>™</sup>  
ONE GREAT SITE FOR TOOLING AROUND



Address: 145 Mountain Brook Drive  
Canton, GA 30115

Website: [www.gditools.com](http://www.gditools.com)

Phone: 770-345-1275

Toll-free: 877-GDI-Tool (434-8665)

Email: [admin@gditools.com](mailto:admin@gditools.com)

Fax: 770-345-2394